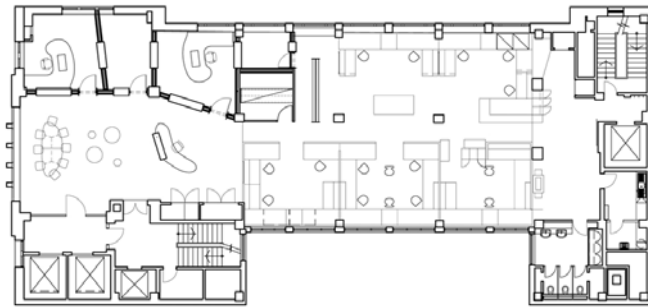


## Joy Melbourne Radio Station



225 Bourke Street  
Melbourne  
\$150,000  
2008

This new home for Joy Melbourne, Australia's first and leading Gay and Lesbian radio station, occupies level 9 of 225 Bourke Street – the 'City Village' project initiated by the City of Melbourne. The fit-out converted generic office space into four new acoustically separated studios, upgraded remaining office space and staff facilities. There was a strong emphasis on sustainability – both in the relocation of the station into the city and in the use of sustainable materials. Core to this was the exposed use of compacted straw panelling, sometimes used for radio studios, but used here for the first time unfinished. Exposed and naturally finished plywood has been used for wide reveals and furniture. MDF was avoided and new painting kept to a minimum.

The re-organisation of the station involved putting 'upfront' the key spaces – the radio studios themselves. In this way it is evident that this is a working radio station when in the busy lift lobby. A direct engagement with the city was established – the studios have great views across to the State Library dome and up Bourke Street across new rooftop bars towards Parliament and St Patrick's beyond. The front foyer space is a merging of meeting room, foyer, reception and green room and creates a significant flexible space that gives entries to the new studios, which form a wall of openings, and suggested a small streetscape. The palette is formed by the waxed Kraft paper of the DURRA straw panelling, the linseed oil treated ply, selective blue matching the Joy corporate identity, and one intensive moment of pink acrylic which forms a donation box and reception desk with laser cut signage. A new meeting table follows the language of the reception desk, and is a complex curved black form-ply shape sitting behind the central windows facing the city.

[click here for more](#)