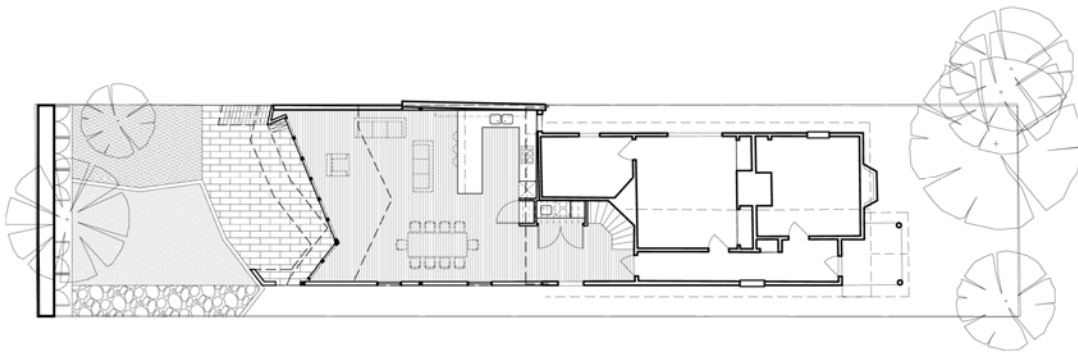


## Foyn-Johanson House



Photography by Ben Hoskins



Northcote  
\$450,000  
2009

This innovative house extension uses both planning constraints (through the building envelope) and the path of the sun to generate and a subtracted barn-like form at the rear of an existing weatherboard house. The subtracted sun path enables the rear garden and outdoor living area to enjoy direct sunlight, correcting the inherited orientation of the house.

The rear facade is a sustainable artificial timber screen system used for sunshading, balustrading and view screening. The side walling is treated like a roof.