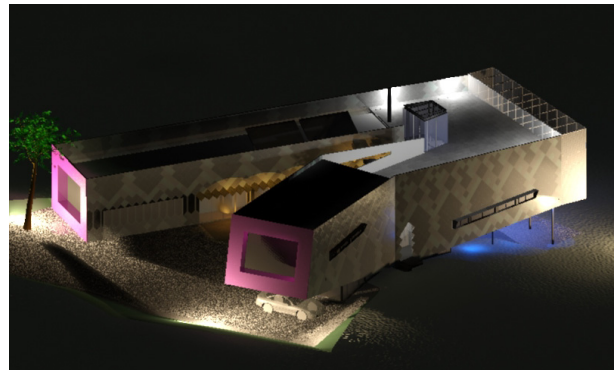
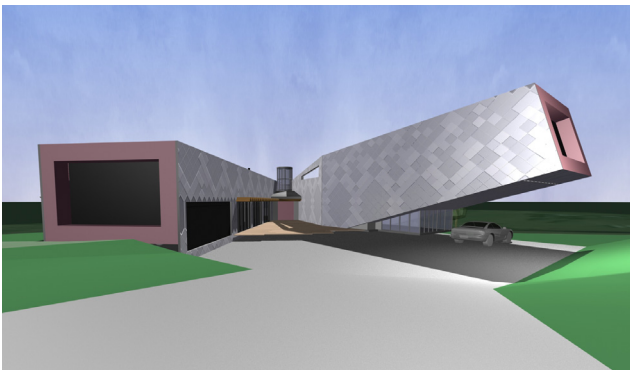
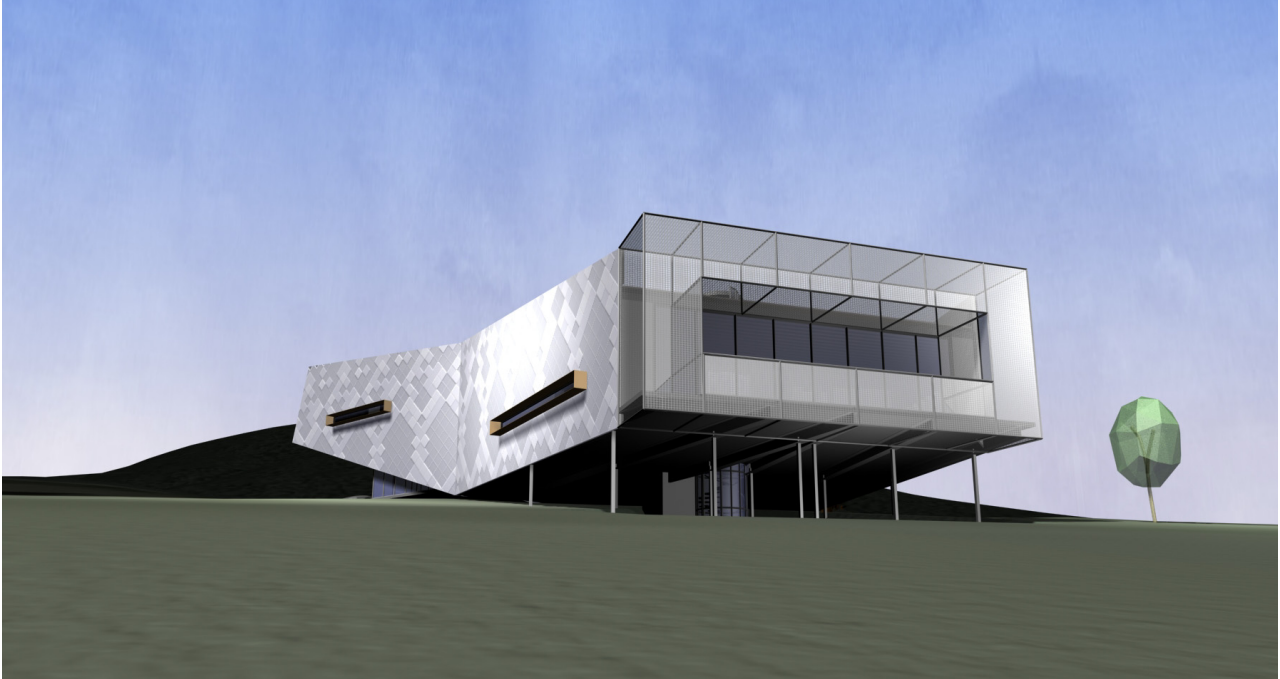


Pants (Heald) House, Mount Dandenong, Victoria



Heald House
Kilsyth, Victoria
2007-

This new family house on the foothills of Mount Dandenong re-works the classic 'L' shaped house into a directional 'V' form to create a sheltered entry courtyard. One 'leg' of the house extends out of the ground and creates a dramatic cantilever upon entry. This contains an upper level 'apartment' for parents which then accesses onto a roof deck over most of the roof. The house is clad in a snake-skin like series of rotated Colorbond panels, shifting the eye and sense of scale across it. An under-croft level is created on the western side as the main living area is suspended above the falling landscape. A large stainless steel mesh framed balcony focuses a view back toward the city skyline of Melbourne.