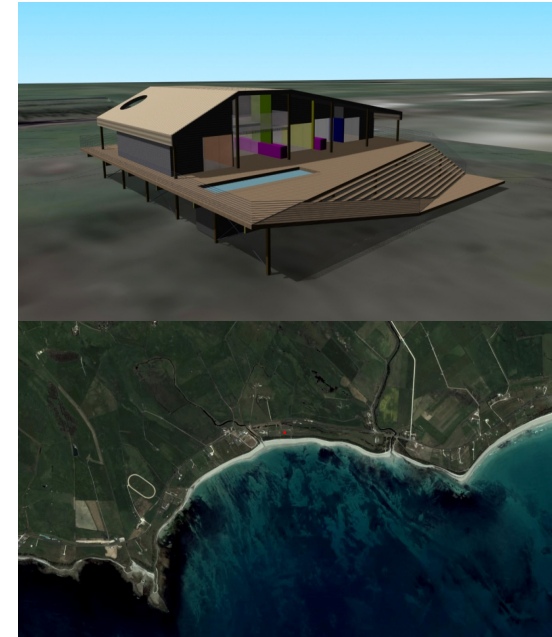
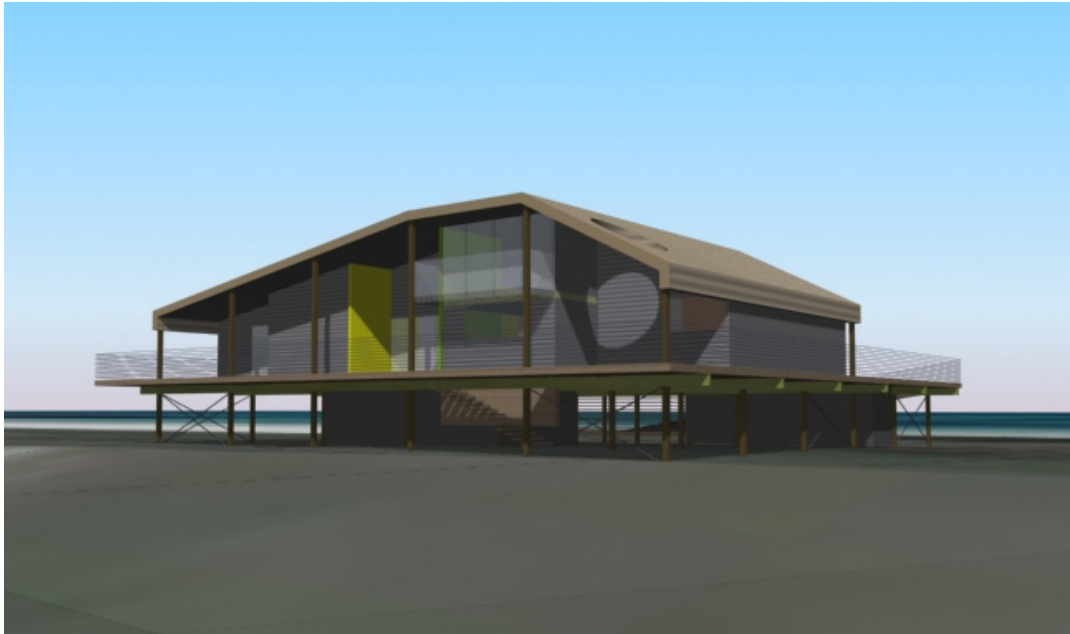


Ennis House



Riddoch Bay, South Australia
\$800k, 2009-10

The house fronts onto Riddoch Bay, directly south of Mount Gambier in South Australia. Behind the dunes the house is elevated on a 25m square deck and is designed to give protection from local winds and views to the beach to the south and the hills to the north. To be made entirely from locally grown pine, the house is designed to maximise protected north sunlight and to embrace beachside living. A large staircase takes the owners down to the beach, and becomes a space for outdoor living. The house's plan modulates in and out under a large performance-designed roof. A series of courtyards is created to offer differing kinds of protection from sun, wind and rain depending on the time of year.